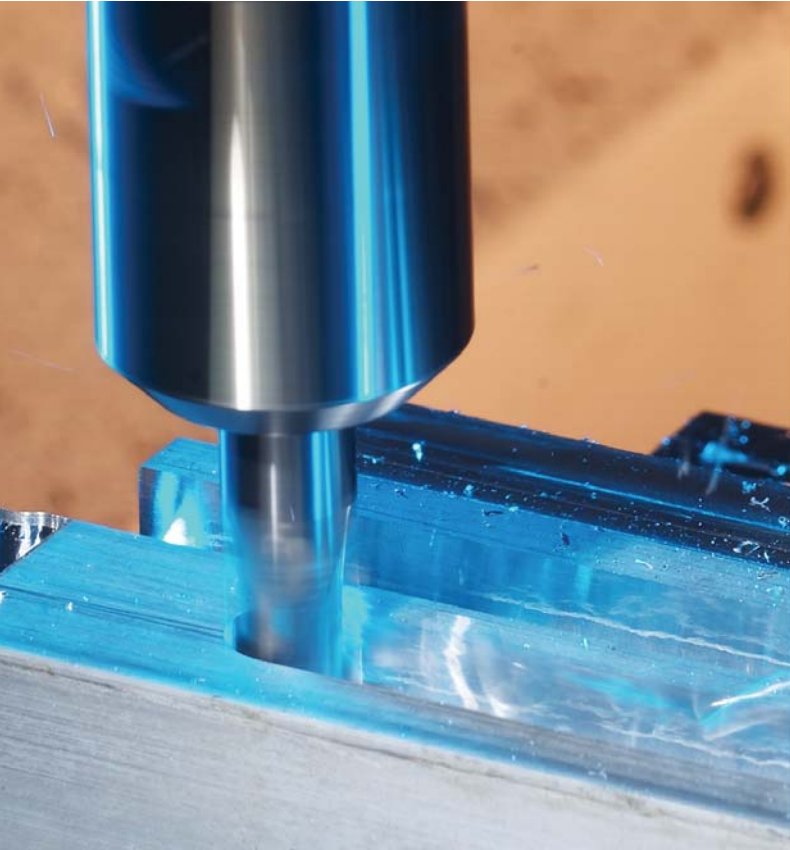




EXOCARB® AERO™ BLIZZARD®

For Maximum Chip Removal Rates in Aluminum



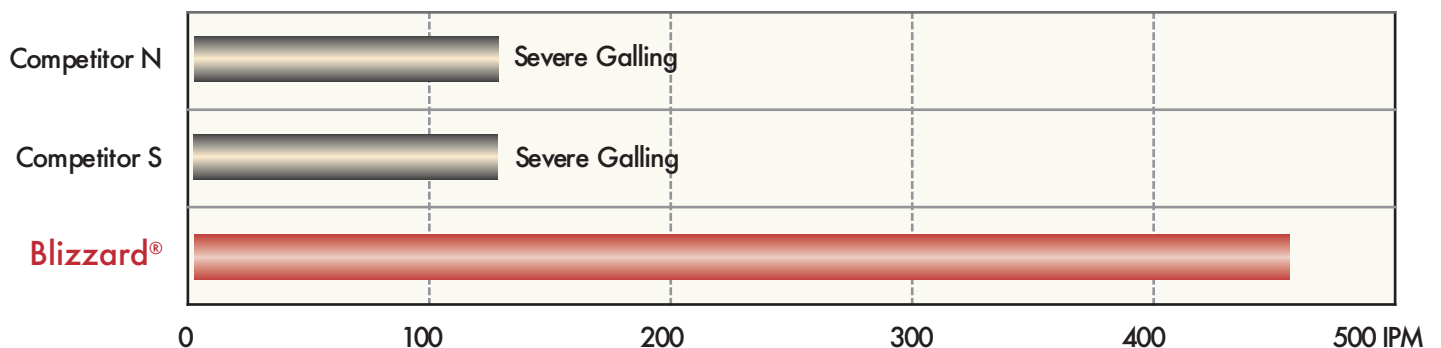
FEATURES

- Specially designed for Aluminum applications.
- Special end cut gash and offset teeth allows for large depths of cut and maximum feed per tooth.
- Regular grain carbide: Low Cobalt enhances tool life (since Al bonds with Cobalt) by reducing BUE.
- High polish flutes, bright and DLC coatings for extended tool life.
- Corner radii available (in stock) 0.010 - 0.120 dependent on diameter.

Blizzard® Test Data

Slotting in A6061

Speed: 9,000 RPM
Depth: 0.400" Slotting
Coolant: Water Soluble
Machine: Horizontal MC



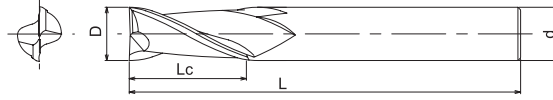
The OSG BLIZZARD® leaves the competition behind in a flurry of aluminum chips!!!

List 2021

BLIZZARD®, Stub Length, 2 Flute, Square & Corner Radius



Tolerance for milling diameter
0 ~ -0.002



EDP Number	Mill Dia.	Corner Radius	OAL	Length of Cut	Shank Dia.	Bright Price (Each)	DLC Price (Each)
	D	R	L	Lc	d		
202101	1/8	-	1-1/2	1/4	1/8	10.90	17.28
202102	1/8	0.01	1-1/2	1/4	1/8	12.54	18.91
202105	5/32	-	2	5/16	3/16	14.70	25.00
202106	5/32	0.02	2	5/16	3/16	16.91	25.00
202109	3/16	-	2	5/16	3/16	14.98	23.07
202110	3/16	0.02	2	5/16	3/16	17.24	25.33
202113	7/32	-	2-1/2	3/8	1/4	22.25	38.83
202114	7/32	0.02	2-1/2	3/8	1/4	25.60	42.17
202117	1/4	-	2-1/2	3/8	1/4	20.22	36.80
202118	1/4	0.02	2-1/2	3/8	1/4	23.25	39.83
202119	1/4	0.03	2-1/2	3/8	1/4	23.25	39.83
202120	1/4	0.06	2-1/2	3/8	1/4	23.25	39.83
202121	9/32	-	2-1/2	7/16	5/16	24.04	48.79
202122	9/32	0.02	2-1/2	7/16	5/16	27.64	52.40
202125	5/16	-	2-1/2	7/16	5/16	21.86	46.61
202126	5/16	0.02	2-1/2	7/16	5/16	25.14	49.90
202127	5/16	0.03	2-1/2	7/16	5/16	25.14	49.90
202129	11/32	-	2-1/2	1/2	3/8	28.05	52.80
202130	11/32	0.02	2-1/2	1/2	3/8	32.26	57.01
202133	3/8	-	2-1/2	1/2	3/8	25.52	50.27
202134	3/8	0.02	2-1/2	1/2	3/8	29.35	54.11
202135	3/8	0.03	2-1/2	1/2	3/8	29.35	54.11
202136	3/8	0.06	2-1/2	1/2	3/8	29.35	54.11

EDP Number	Mill Dia.	Corner Radius	OAL	Length of Cut	Shank Dia.	Bright Price (Each)	DLC Price (Each)
	D	R	L	Lc	d		
202137	13/32	-	2-3/4	9/16	7/16	39.97	70.52
202138	13/32	0.02	2-3/4	9/16	7/16	45.98	76.53
202141	7/16	-	2-3/4	9/16	7/16	40.44	70.99
202142	7/16	0.02	2-3/4	9/16	7/16	46.50	77.05
202145	15/32	-	3	5/8	1/2	45.20	75.75
202146	15/32	0.02	3	5/8	1/2	51.98	82.53
202149	1/2	-	3	5/8	1/2	41.10	71.66
202150	1/2	0.02	3	5/8	1/2	47.27	77.82
202151	1/2	0.03	3	5/8	1/2	47.27	77.82
202152	1/2	0.06	3	5/8	1/2	47.27	77.82
202153	5/8	-	3-1/2	3/4	5/8	78.60	122.95
202154	5/8	0.03	3-1/2	3/4	5/8	90.40	134.74
202155	5/8	0.06	3-1/2	3/4	5/8	90.40	134.74
202156	5/8	0.09	3-1/2	3/4	5/8	90.40	134.74
202157	3/4	-	4	1	3/4	110.30	162.64
202158	3/4	0.06	4	1	3/4	126.85	179.18
202159	3/4	0.09	4	1	3/4	126.85	179.18
202160	3/4	0.12	4	1	3/4	126.85	179.18
202161	1	-	4	1-1/4	1	200.16	288.79
202162	1	0.06	4	1-1/4	1	230.18	318.82
202163	1	0.09	4	1-1/4	1	230.18	318.82
202164	1	0.12	4	1-1/4	1	230.18	318.82

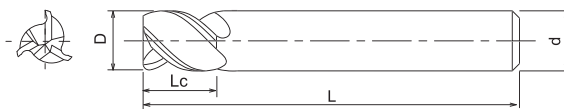
Packed: 1 pc. Specify treatment at time of order: 00=Bright; 09=DLC.
* Additional corner radii available upon request.

List 2041 NEW!

BLIZZARD®, Stub Length, 3 Flute, Square & Corner Radius



Tolerance for milling diameter
0 ~ -0.002



EDP Number	Mill Dia.	Corner Radius	OAL	Length of Cut	Shank Dia.	Bright Price (Each)	DLC Price (Each)
	D	R	L	Lc	d		
204101	1/8	-	1-1/2	1/4	1/8	10.90	—
204102	1/8	0.01	1-1/2	1/4	1/8	12.54	—
204109	3/16	-	2	5/16	3/16	14.98	—
204110	3/16	0.02	2	5/16	3/16	17.24	—
204117	1/4	-	2-1/2	3/8	1/4	20.22	—
204118	1/4	0.02	2-1/2	3/8	1/4	23.25	—
204119	1/4	0.03	2-1/2	3/8	1/4	23.25	—
204120	1/4	0.06	2-1/2	3/8	1/4	23.25	—
204125	5/16	-	2-1/2	7/16	5/16	24.03	48.78
204126	5/16	0.02	2-1/2	7/16	5/16	27.63	—
204127	5/16	0.03	2-1/2	7/16	5/16	27.63	—
204133	3/8	-	2-1/2	1/2	3/8	29.76	—
204134	3/8	0.02	2-1/2	1/2	3/8	34.24	—
204135	3/8	0.03	2-1/2	1/2	3/8	34.24	—
204136	3/8	0.06	2-1/2	1/2	3/8	34.24	—
204141	7/16	-	2-3/4	9/16	7/16	42.68	—
204142	7/16	0.02	2-3/4	9/16	7/16	49.09	—

EDP Number	Mill Dia.	Corner Radius	OAL	Length of Cut	Shank Dia.	Bright Price (Each)	DLC Price (Each)
	D	R	L	Lc	d		
204149	1/2	-	3	5/8	1/2	45.51	76.06
204150	1/2	0.02	3	5/8	1/2	52.34	—
204151	1/2	0.03	3	5/8	1/2	52.34	—
204152	1/2	0.06	3	5/8	1/2	52.34	—
204153	5/8	-	3-1/2	3/4	5/8	85.77	—
204154	5/8	0.03	3-1/2	3/4	5/8	98.65	—
204155	5/8	0.06	3-1/2	3/4	5/8	98.65	—
204156	5/8	0.09	3-1/2	3/4	5/8	98.65	—
204157	3/4	-	4	1	3/4	120.79	—
204158	3/4	0.06	4	1	3/4	138.92	—
204159	3/4	0.09	4	1	3/4	138.92	—
204160	3/4	0.12	4	1	3/4	138.92	—
204161	1	-	4	1-1/4	1	210.64	—
204162	1	0.06	4	1-1/4	1	242.25	—
204163	1	0.09	4	1-1/4	1	242.25	—
204164	1	0.12	4	1-1/4	1	242.25	—

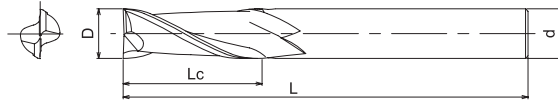
Packed: 1 pc. Specify treatment at time of order: 00=Bright; 09=DLC
Prices listed are in US Dollars and are only good in the U.S.

List 2022



BLIZZARD®, Regular Length, 2 Flute, Square & Corner Radius

Tolerance for milling diameter
0 ~ - 0.002



EDP Number	Mill Dia.	Corner Radius	OAL	Length of Cut	Shank Dia.	Bright Price (Each)	DLC Price (Each)
	D	R	L	Lc	d		
202201	1/8	-	1-1/2	3/8	1/8	11.99	18.36
202202	1/8	0.01	1-1/2	3/8	1/8	13.79	20.17
202205	5/32	-	2	9/16	3/16	16.34	-
202206	5/32	0.02	2	9/16	3/16	18.80	26.89
202209	3/16	-	2	9/16	3/16	16.75	24.83
202210	3/16	0.02	2	9/16	3/16	19.27	27.35
202213	7/32	-	2-1/2	3/4	1/4	24.71	41.29
202214	7/32	0.02	2-1/2	3/4	1/4	28.41	44.99
202217	1/4	-	2-1/2	3/4	1/4	22.46	39.04
202218	1/4	0.02	2-1/2	3/4	1/4	25.83	42.41
202219	1/4	0.03	2-1/2	3/4	1/4	25.83	42.41
202220	1/4	0.06	2-1/2	3/4	1/4	25.83	42.41
202221	9/32	-	2-1/2	13/16	5/16	26.70	51.45
202222	9/32	0.02	2-1/2	13/16	5/16	30.70	55.47
202225	5/16	-	2-1/2	13/16	5/16	24.28	49.04
202226	5/16	0.02	2-1/2	13/16	5/16	27.93	52.69
202227	5/16	0.03	2-1/2	13/16	5/16	27.93	52.69
202229	11/32	-	2-1/2	1	3/8	31.17	55.92
202230	11/32	0.02	2-1/2	1	3/8	35.86	60.61
202233	3/8	-	2-1/2	1	3/8	28.19	52.95
202234	3/8	0.02	2-1/2	1	3/8	32.42	57.19
202235	3/8	0.03	2-1/2	1	3/8	32.42	57.19
202236	3/8	0.06	2-1/2	1	3/8	32.42	57.19

EDP Number	Mill Dia.	Corner Radius	OAL	Length of Cut	Shank Dia.	Bright Price (Each)	DLC Price (Each)
	D	R	L	Lc	d		
202237	13/32	-	2-3/4	1	7/16	44.41	74.96
202238	13/32	0.02	2-3/4	1	7/16	51.08	81.64
202241	7/16	-	2-3/4	1	7/16	40.39	70.95
202242	7/16	0.02	2-3/4	1	7/16	46.45	77.00
202245	15/32	-	3	1-1/4	1/2	50.22	80.77
202246	15/32	0.02	3	1-1/4	1/2	57.76	88.30
202249	1/2	-	3	1-1/4	1/2	45.65	76.19
202250	1/2	0.02	3	1-1/4	1/2	52.50	83.05
202251	1/2	0.03	3	1-1/4	1/2	52.50	83.05
202252	1/2	0.06	3	1-1/4	1/2	52.50	83.05
202253	5/8	-	3-1/2	1-5/8	5/8	87.32	131.66
202254	5/8	0.03	3-1/2	1-5/8	5/8	100.43	144.77
202255	5/8	0.06	3-1/2	1-5/8	5/8	100.43	144.77
202256	5/8	0.09	3-1/2	1-5/8	5/8	100.43	144.77
202257	3/4	-	4	1-5/8	3/4	122.55	174.90
202258	3/4	0.06	4	1-5/8	3/4	140.94	193.28
202259	3/4	0.09	4	1-5/8	3/4	140.94	193.28
202260	3/4	0.12	4	1-5/8	3/4	140.94	193.28
202261	1	-	5	2	1	240.70	329.35
202262	1	0.06	5	2	1	276.81	365.45
202263	1	0.09	5	2	1	276.81	365.45
202264	1	0.12	5	2	1	276.81	365.45

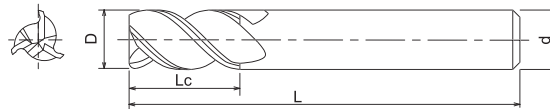
Packed: 1 pc. Specify treatment at time of order: 00=Bright; 09=DLC.
* Additional corner radii available upon request.

List 2042 NEW!



BLIZZARD®, Regular Length, 3 Flute, Square & Corner Radius

Tolerance for milling diameter
0 ~ - 0.002



EDP Number	Mill Dia.	Corner Radius	OAL	Length of Cut	Shank Dia.	Bright Price (Each)	DLC Price (Each)
	D	R	L	Lc	d		
204201	1/8	-	1-1/2	3/8	1/8	11.99	-
204202	1/8	0.01	1-1/2	3/8	1/8	13.79	-
204209	3/16	-	2	9/16	3/16	16.75	-
204210	3/16	0.02	2	9/16	3/16	19.27	-
204217	1/4	-	2-1/2	5/8	1/4	22.46	39.04
204218	1/4	0.02	2-1/2	5/8	1/4	25.83	-
204219	1/4	0.03	2-1/2	5/8	1/4	25.83	-
204220	1/4	0.06	2-1/2	5/8	1/4	25.83	-
204225	5/16	-	2-1/2	13/16	5/16	26.69	-
204226	5/16	0.02	2-1/2	13/16	5/16	30.69	-
204227	5/16	0.03	2-1/2	13/16	5/16	30.69	-
204233	3/8	-	2-1/2	1	3/8	33.08	57.83
204234	3/8	0.02	2-1/2	1	3/8	38.04	-
204235	3/8	0.03	2-1/2	1	3/8	38.04	-
204236	3/8	0.06	2-1/2	1	3/8	38.04	-
204241	7/16	-	2-3/4	1-1/4	7/16	46.05	-
204242	7/16	0.02	2-3/4	1-1/4	7/16	52.96	-

EDP Number	Mill Dia.	Corner Radius	OAL	Length of Cut	Shank Dia.	Bright Price (Each)	DLC Price (Each)
	D	R	L	Lc	d		
204249	1/2	-	3	1-1/4	1/2	50.58	81.13
204250	1/2	0.02	3	1-1/4	1/2	58.17	-
204251	1/2	0.03	3	1-1/4	1/2	58.17	-
204252	1/2	0.06	3	1-1/4	1/2	58.17	-
204253	5/8	-	3-1/2	1-5/8	5/8	95.32	139.67
204254	5/8	0.03	3-1/2	1-5/8	5/8	109.63	-
204255	5/8	0.06	3-1/2	1-5/8	5/8	109.63	-
204256	5/8	0.09	3-1/2	1-5/8	5/8	109.63	-
204257	3/4	-	4	1-5/8	3/4	134.22	186.56
204258	3/4	0.06	4	1-5/8	3/4	154.36	-
204259	3/4	0.09	4	1-5/8	3/4	154.36	-
204260	3/4	0.12	4	1-5/8	3/4	154.36	-
204261	1	-	5	2	1	251.20	-
204262	1	0.06	5	2	1	288.88	-
204263	1	0.09	5	2	1	288.88	-
204264	1	0.12	5	2	1	288.88	-

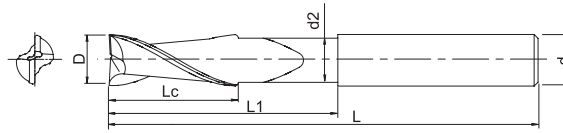
Packed: 1 pc. Specify treatment at time of order: 00=Bright; 09=DLC
Prices listed are in US Dollars and are only good in the U.S.

List 2023 NEW!



BLIZZARD®, Regular Length, 2 Flute, Square & Corner Radius, Reduced Neck

Tolerance for milling diameter
0 ~ - 0.002



EDP Number	Mill Diameter	Corner Radius	OAL	Length of Cut	Neck Diameter	Neck Length	Shank Diameter	Bright Price (Each)
	D	R	L	Lc	d2	L1	d	
20230100	1/4	-	2-1/2	1/4	0.2375	1-1/8	1/4	25.92
20230200	1/4	0.02	2-1/2	1/4	0.2375	1-1/8	1/4	29.81
20230300	1/4	0.03	2-1/2	1/4	0.2375	1-1/8	1/4	29.81
20230400	1/4	0.06	2-1/2	1/4	0.2375	1-1/8	1/4	29.81
20230500	1/2	-	3	1/2	0.4750	1-3/8	1/2	52.67
20230600	1/2	0.02	3	1/2	0.4750	1-3/8	1/2	60.57
20230700	1/2	0.03	3	1/2	0.4750	1-3/8	1/2	60.57
20230800	1/2	0.06	3	1/2	0.4750	1-3/8	1/2	60.57
20230900	5/8	-	3-1/2	5/8	0.5938	1-5/8	5/8	96.56
20231000	5/8	0.03	3-1/2	5/8	0.5938	1-5/8	5/8	111.03
20231100	5/8	0.06	3-1/2	5/8	0.5938	1-5/8	5/8	111.03
20231200	5/8	0.09	3-1/2	5/8	0.5938	1-5/8	5/8	111.03
20231300	3/4	-	4	3/4	0.7125	2	3/4	135.52
20231400	3/4	0.06	4	3/4	0.7125	2	3/4	155.84
20231500	3/4	0.09	4	3/4	0.7125	2	3/4	155.84
20231600	3/4	0.12	4	3/4	0.7125	2	3/4	155.84
20231700	1	-	5	1	0.9500	2-5/8	1	266.17
20231800	1	0.06	5	1	0.9500	2-5/8	1	306.08
20231900	1	0.09	5	1	0.9500	2-5/8	1	306.08
20232000	1	0.12	5	1	0.9500	2-5/8	1	306.08

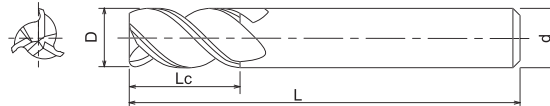
Packed: 1 pc. DLC coating available on request.

List 2024 NEW!



BLIZZARD®, Long Length, 2 Flute, Square & Corner Radius, Reduced Neck

Tolerance for milling diameter
0 ~ - 0.002



EDP Number	Mill Diameter	Corner Radius	OAL	Length of Cut	Neck Diameter	Neck Length	Shank Diameter	Bright Price (Each)
	D	R	L	Lc	d2	L1	d	
20240100	1/4	-	4	1/4	0.2375	2-1/8	1/4	49.25
20240200	1/4	0.02	4	1/4	0.2375	2-1/8	1/4	56.64
20240300	1/4	0.03	4	1/4	0.2375	2-1/8	1/4	56.64
20240400	1/4	0.06	4	1/4	0.2375	2-1/8	1/4	56.64
20240500	1/2	-	4	1/2	0.4750	2-1/8	1/2	68.47
20240600	1/2	0.02	4	1/2	0.4750	2-1/8	1/2	78.74
20240700	1/2	0.03	4	1/2	0.4750	2-1/8	1/2	78.74
20240800	1/2	0.06	4	1/2	0.4750	2-1/8	1/2	78.74
20240900	5/8	-	6	5/8	0.5938	2-3/8	5/8	135.18
20241000	5/8	0.03	6	5/8	0.5938	2-3/8	5/8	155.46
20241100	5/8	0.06	6	5/8	0.5938	2-3/8	5/8	155.46
20241200	5/8	0.09	6	5/8	0.5938	2-3/8	5/8	155.46
20241300	3/4	-	6	3/4	0.7125	2-1/2	3/4	176.17
20241400	3/4	0.06	6	3/4	0.7125	2-1/2	3/4	202.60
20241500	3/4	0.09	6	3/4	0.7125	2-1/2	3/4	202.60
20241600	3/4	0.12	6	3/4	0.7125	2-1/2	3/4	202.60
20241700	1	-	6	1	0.9500	3-3/8	1	279.47
20241800	1	0.06	6	1	0.9500	3-3/8	1	321.39
20241900	1	0.09	6	1	0.9500	3-3/8	1	321.39
20242000	1	0.12	6	1	0.9500	3-3/8	1	321.39

Packed: 1 pc. DLC coating available on request.

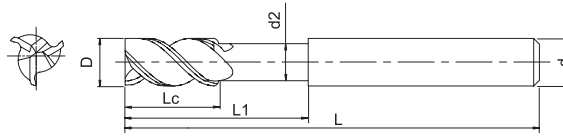
Prices listed are in US Dollars and are only good in the U.S.

List 2043 NEW!

BLIZZARD®, Regular Length, 3 Flute, Square & Corner Radius



Tolerance for milling diameter
0 ~ -0.002



EDP Number	Mill Diameter	Corner Radius	OAL	Length of Cut	Neck Diameter	Neck Length	Shank Diameter	Bright Price (Each)
	D	R	L	Lc	d2	L1	d	
20430100	1/4	-	2-1/2	1/4	0.246	1-1/8	1/4	25.92
20430200	1/4	0.02	2-1/2	1/4	0.246	1-1/8	1/4	29.81
20430300	1/4	0.03	2-1/2	1/4	0.246	1-1/8	1/4	29.81
20430400	1/4	0.06	2-1/2	1/4	0.246	1-1/8	1/4	29.81
20430500	1/2	-	3	1/2	0.496	1-3/8	1/2	52.67
20430600	1/2	0.02	3	1/2	0.496	1-3/8	1/2	60.57
20430700	1/2	0.03	3	1/2	0.496	1-3/8	1/2	60.57
20430800	1/2	0.06	3	1/2	0.496	1-3/8	1/2	60.57
20430900	5/8	-	3-1/2	5/8	0.621	1-5/8	5/8	96.56
20431000	5/8	0.03	3-1/2	5/8	0.621	1-5/8	5/8	111.03
20431100	5/8	0.06	3-1/2	5/8	0.621	1-5/8	5/8	111.03
20431200	5/8	0.09	3-1/2	5/8	0.621	1-5/8	5/8	111.03
20431300	3/4	-	4	3/4	0.746	2	3/4	135.52
20431400	3/4	0.06	4	3/4	0.746	2	3/4	155.84
20431500	3/4	0.09	4	3/4	0.746	2	3/4	155.84
20431600	3/4	0.12	4	3/4	0.746	2	3/4	155.84
20431700	1	-	5	1	0.992	2-5/8	1	266.17
20431800	1	0.06	5	1	0.992	2-5/8	1	306.08
20431900	1	0.09	5	1	0.992	2-5/8	1	306.08
20432000	1	0.12	5	1	0.992	2-5/8	1	306.08

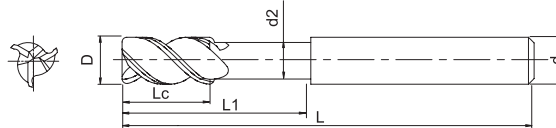
Packed: 1 pc. DLC coating available on request.

List 2048 NEW!

BLIZZARD®, Long Length, 3 Flute, Square & Corner Radius, Reduced Neck



Tolerance for milling diameter
0 ~ -0.002



EDP Number	Mill Diameter	Corner Radius	OAL	Length of Cut	Neck Diameter	Neck Length	Shank Diameter	Bright Price (Each)
	D	R	L	Lc	d2	L1	d	
20480100	1/4	-	4	1/4	0.246	2-1/8	1/4	49.25
20480200	1/4	0.02	4	1/4	0.246	2-1/8	1/4	56.64
20480300	1/4	0.03	4	1/4	0.246	2-1/8	1/4	56.64
20480400	1/4	0.06	4	1/4	0.246	2-1/8	1/4	56.64
20480500	1/2	-	4	1/2	0.496	2-1/8	1/2	68.47
20480600	1/2	0.02	4	1/2	0.496	2-1/8	1/2	78.74
20480700	1/2	0.03	4	1/2	0.496	2-1/8	1/2	78.74
20480800	1/2	0.06	4	1/2	0.496	2-1/8	1/2	78.74
20480900	5/8	-	6	5/8	0.621	2-3/8	5/8	135.18
20481000	5/8	0.03	6	5/8	0.621	2-3/8	5/8	155.46
20481100	5/8	0.06	6	5/8	0.621	2-3/8	5/8	155.46
20481200	5/8	0.09	6	5/8	0.621	2-3/8	5/8	155.46
20481300	3/4	-	6	3/4	0.746	2-1/2	3/4	176.17
20481400	3/4	0.06	6	3/4	0.746	2-1/2	3/4	202.60
20481500	3/4	0.09	6	3/4	0.746	2-1/2	3/4	202.60
20481600	3/4	0.12	6	3/4	0.746	2-1/2	3/4	202.60
20481700	1	-	6	1	0.992	3-3/8	1	279.47
20481800	1	0.06	6	1	0.992	3-3/8	1	321.39
20481900	1	0.09	6	1	0.992	3-3/8	1	321.39
20482000	1	0.12	6	1	0.992	3-3/8	1	321.39

Packed: 1 pc. DLC coating available on request.

Prices listed are in US Dollars and are only good in the U.S.

List 2021

Aluminum Alloys A6061, A7075		Slotting Operations up to 1D depth of cut	
Diameter	RPM	IPT	IPM
1/8	36,600	0.002	146.4
3/16	24,400	0.004	195.2
1/4	18,300	0.0055	201.3
3/8	12,200	0.008	195.2
7/16	10,400	0.01	208
1/2	9,100	0.0125	227.5
5/8	7,300	0.014	204.4
3/4	6,100	0.016	195.2
1	4,500	0.02	180

List 2022, 2023, 2024

Aluminum Alloys A6061, A7075		Slotting Operations up to 0.6D depth of cut	
Diameter	RPM	IPT	IPM
1/8	30,500	0.002	122
3/16	20,300	0.004	162.4
1/4	15,200	0.0055	167.2
3/8	10,100	0.008	161.6
7/16	8,700	0.01	174
1/2	7,600	0.0125	190
5/8	6,100	0.014	170.8
3/4	5,100	0.016	163.2
1	3,800	0.02	152

List 2041

Aluminum Alloys A6061, A7075		Slotting Operations up to 0.5 x D depth of cut	
Diameter	RPM	IPT	IPM
1/8	36,600	0.0014	153.7
3/16	24,400	0.0028	205.0
1/4	18,300	0.0039	211.4
3/8	12,200	0.0056	205.0
7/16	10,400	0.0070	218.4
1/2	9,100	0.0088	238.9
5/8	7,300	0.0098	214.6
3/4	6,100	0.0112	205.0
1	4,500	0.0140	189.0

List 2042, 2043, 2048

Aluminum Alloys A6061, A7075		Slotting Operations up to 0.5 x D depth of cut	
Diameter	RPM	IPT	IPM
1/8	30,500	0.0014	128.1
3/16	20,300	0.0028	170.5
1/4	15,200	0.0039	175.6
3/8	10,100	0.0056	169.7
7/16	8,700	0.0070	182.7
1/2	7,600	0.0088	199.5
5/8	6,100	0.0098	179.3
3/4	5,100	0.0112	171.4
1	3,800	0.0140	159.6



- Use safety cover, safety glasses and safety shoes during operation.
- Do not touch cutting edges with bare hands.
- Do not touch cutting chips with bare hands. Chips will be hot after cutting.
- Stop Cutting when the tool becomes dull.
- Stop cutting operation immediately if you hear any strange sounds.
- Do not modify tools.
- Use correct tools for the operation. Check dimensions to ensure proper selection.



OSG TAP & DIE, INC.

676 E. Fullerton Avenue • Glendale Heights • IL 60139
800.837.2223 • FAX: 800.837.3334 • www.osgtool.com